

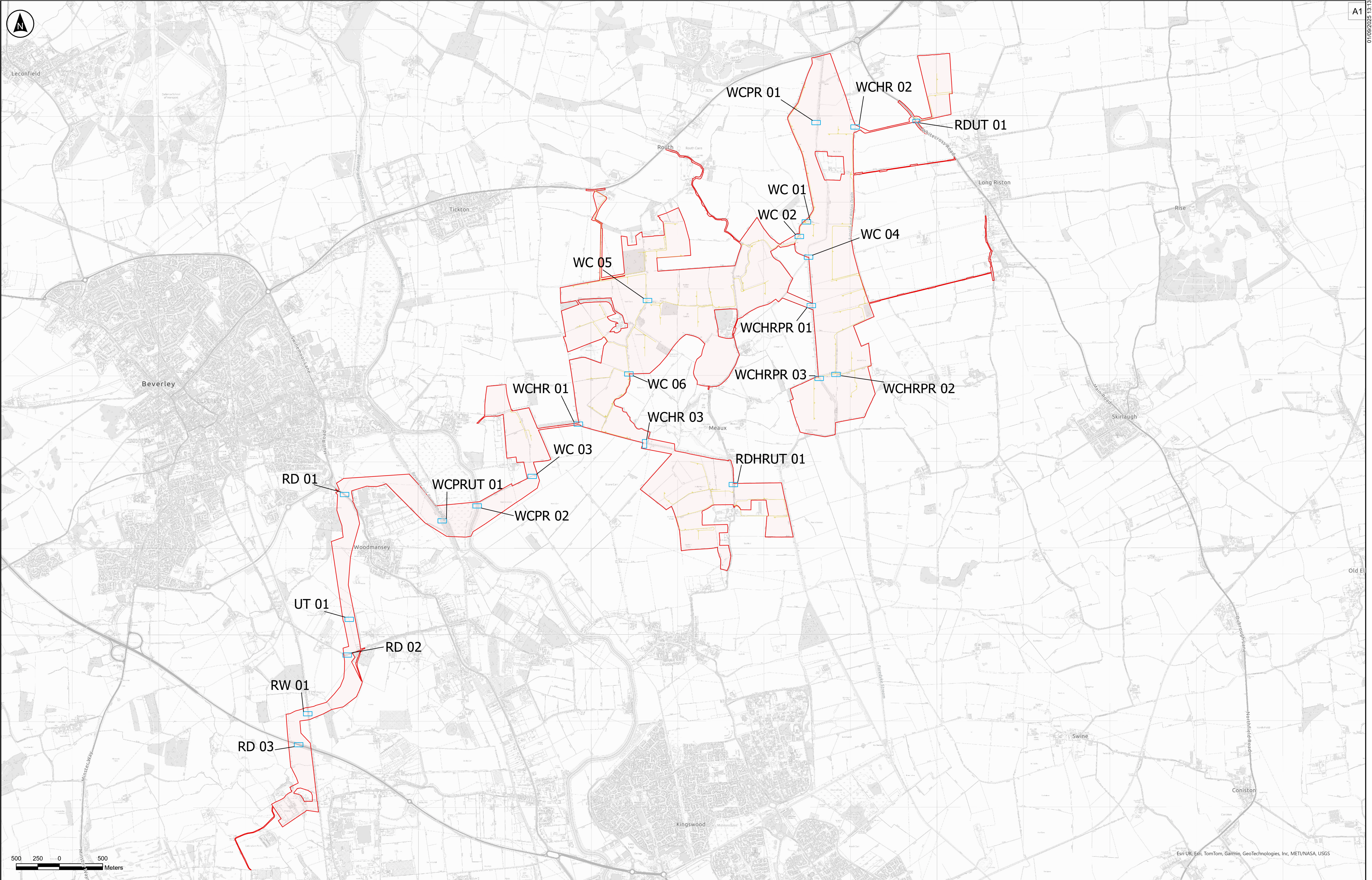
Peartree Hill Solar Farm


Environmental Statement

Volume 3

Figure 3.3: Indicative HDD Crossing Points

Revision 2





Esri UK, Esri, TomTom, Garmin, FAO, METI/NASA, USGS

Key

	Order Limits		Internal Access Tracks
	HDD Areas		

[RW] – Railway
[RD] – Road
[WC] – Watercourse
[HR] – Hedgerow
[RR] – River
[UT] – Utilities


The Base mapping is based upon Ordnance Survey (OS) data. Reproduced by permission of Ordnance Survey on behalf of HMSO. © Crown copyright and database rights 2025. Ordnance Survey AC00000808122

Notes:

1. The locations for HDD are for illustrative purposes only. HDD will be undertaken within the parameters of the DCO [EN010157/APP/5.8], consent is not sought specifically for these locations.

003	28/08/2025	NAM	EH	AD	MG
Rev	Date	By	Chkd	Appd	Authd

Client



Project Name

Peartree Hill Solar Farm

Drawing Title

Environmental Statement Volume 3, Figure 3.3: HDD Crossing Points

Scale at A1		Coordinate System	
1:20,000		British National Grid	
Status			
DCO Application			
Infrastructure Planning (Applications: Prescribed Forms and Procedure) Regulations 2009: 5(2)(a)			
PINS Number		Rev	
EN010157/APP/5/3		P03	

RWE Renewables UK Limited

Windmill Hill Business Park,
Whitehill Way,
Swindon,
Wiltshire,
England,
SN5 6PB
www.rwe.com